

Discover 6 features that make Future Seeds an iconic and energy-efficient building

Water

Since it rains about 100 days a year in Palmira, we take advantage of the generosity of the local climate. Therefore, at Future Seeds we take all the water we need from the rain and then treat the used water before returning it to the land.



The wind

The roof is designed to let in sunlight, but only as much as necessary, so that heat does not accumulate. This large pergola protects the spaces it covers with its shade and allows them to be open to the landscape, to the wind, to the singing birds.



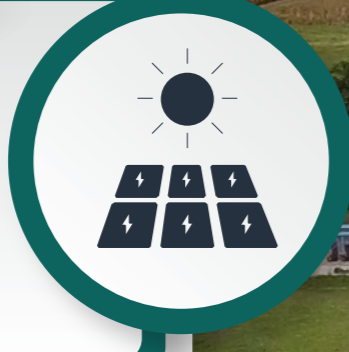
The canopy

This building is intended to behave like a tree, a forest, and a canopy. It is built with the most environmentally friendly materials. Its structure, like the branches of the saman tree, is open to the landscape, the light, the air, and the rain.



The energy

Near Future Seeds there is a solar panel plantation that provides almost half of the electrical energy the building needs to operate.



The habitat

The vegetation we plant is native to the region or adapted to the local climate and needs only rainwater to thrive. It also attracts birds and insects and maintains the health of the soil.



The use of efficient lighting, cooling systems and materials that reduce energy consumption, make this place always environmentally friendly.



The materials

We wanted the construction materials to be the least polluting for the environment. Being sustainable not only implies thinking about the planet and its finite resources, but also about our wellbeing.

